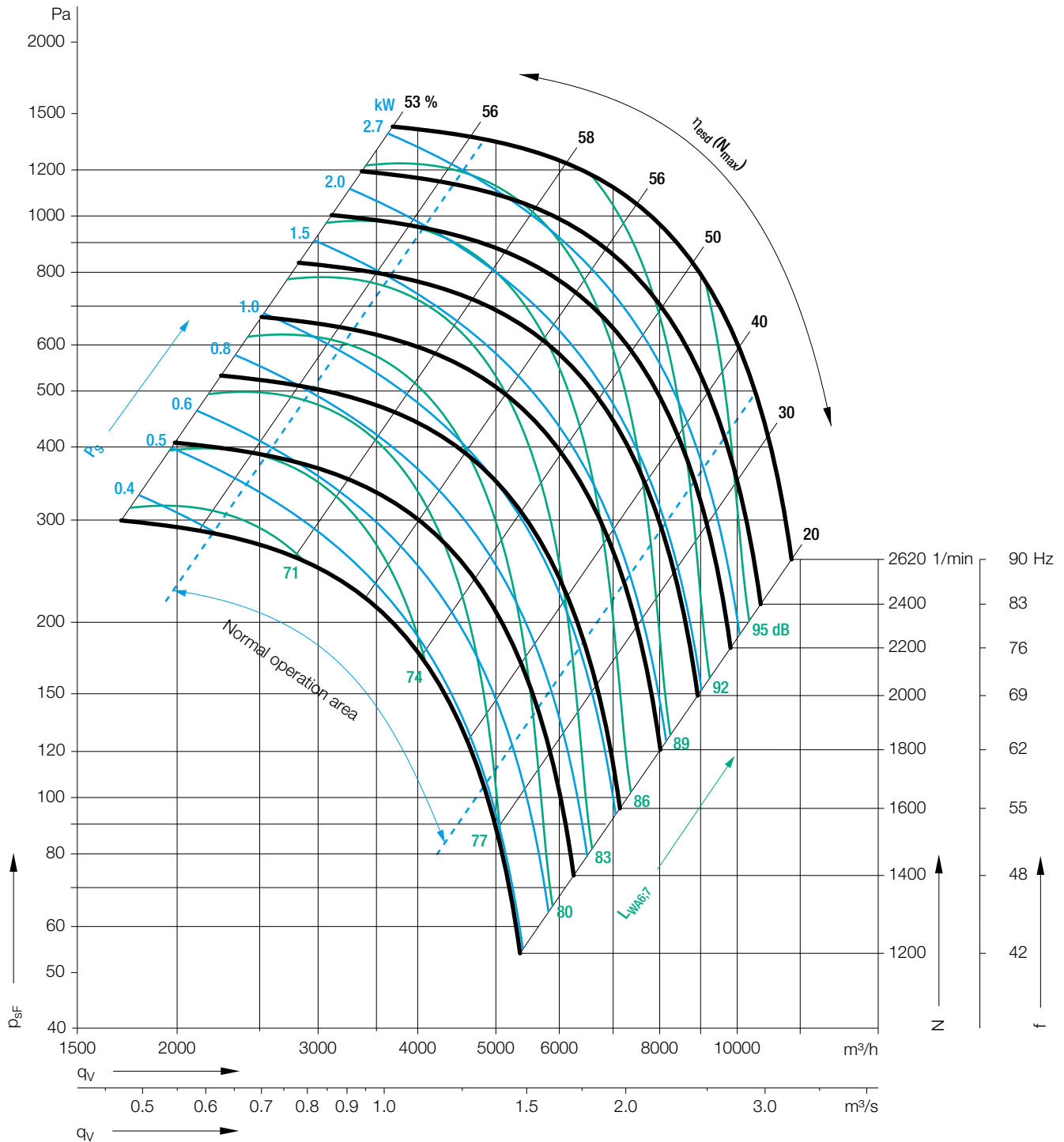


# RZA 11-0355

## Technical Data

Density of media **1.15 kg/m<sup>3</sup>**.  
 Tolerance class **2** according to **DIN 24166**.  
 Measured in installation **A** according to **ISO 5901** (unducted).



### Determination of the Octave level

#### Inlet side

Relative sound power level L<sub>Wref17</sub> at octave band correction factors f<sub>c</sub>.

Duty point	63	125	250	500	1000	2000	4000	8000 Hz
≤ 1.4 q <sub>Vopt</sub>	-9	-2	-3	0	-7	-9	-15	-25 dB
> 1.4 q <sub>Vopt</sub>	-12	-6	-6	0	-7	-7	-13	-25 dB

#### Discharge side

Relative sound power level L<sub>Wref16</sub> at octave band correction factors f<sub>c</sub>.

Duty point	63	125	250	500	1000	2000	4000	8000 Hz
≤ 1.4 q <sub>Vopt</sub>	-5	-7	-5	-1	-6	-9	-16	-26 dB
> 1.4 q <sub>Vopt</sub>	-7	-11	-8	-1	-6	-8	-13	-26 dB